



MARKUS GmbH

BOMA® - ROYAL

5/64" Glanz-Saxony

100% Polyamid Bahnenware
Gesamthöhe ca. 11 mm
Gesamtgewicht ca. 2.600 g/qm
Breite ca. 4 m
Länge ca. 28 m
Brennverhalten EN 13501-1 Cfl-s1

5/64" shine saxony

100% polyamide broadloom
total height ca. 11 mm
total weight ca. 2600 g/sqm
width ca. 4 m
length ca. 28 m
fire classification EN 13501-1 Cfl-s1



Cool Gray 1 U

226311



Warm Gray 1 U

226312



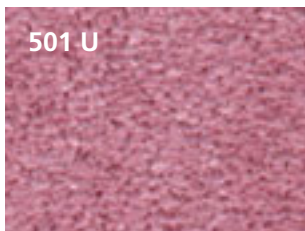
Warm Gray 3 U

226313



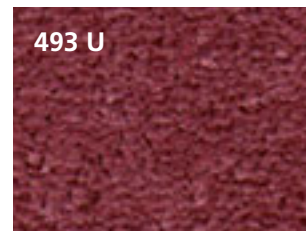
Warm Gray 8 U

226314



501 U

226325



493 U

226326



5125 U

226324



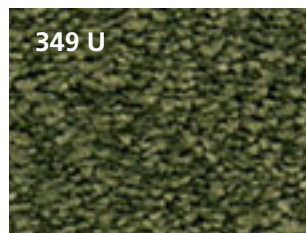
202 C

226327



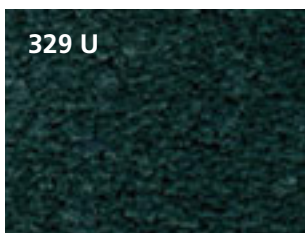
457 U

226319



349 U

226320



329 U

226321



634 U

226322



5395 U

226323

BOMA® - ROYAL



MARKUS GmbH

5/64" Glanz-Saxony

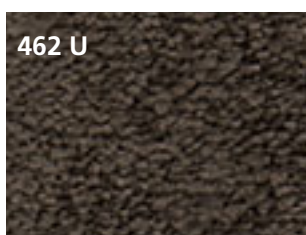
100% Polyamid Bahnenware
Gesamthöhe ca. 11 mm
Gesamtgewicht ca. 2.600 g/qm
Breite ca. 4 m
Länge ca. 28 m
Brennverhalten EN 13501-1 Cfl-s1

5/64" shine saxony

100% polyamide broadloom
total height ca. 11 mm
total weight ca. 2600 g/sqm
width ca. 4 m
length ca. 28 m
fire classification EN 13501-1 Cfl-s1



226317



226315



226316



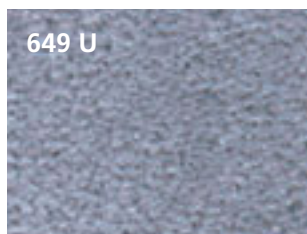
226318



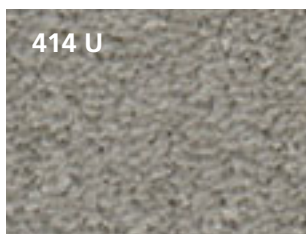
226329



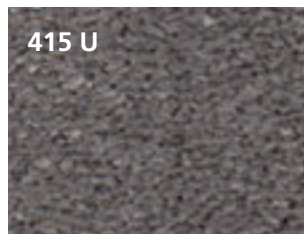
226328



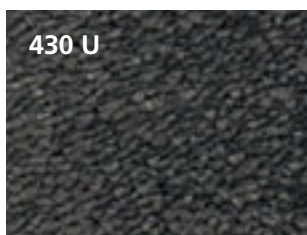
226331



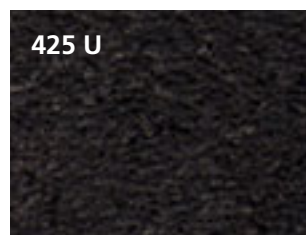
226330



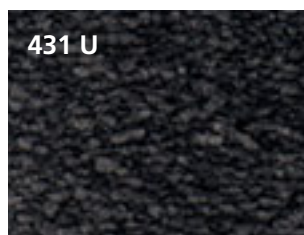
226332



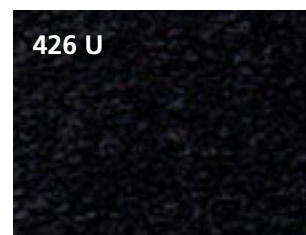
226333



226334



226335



226336