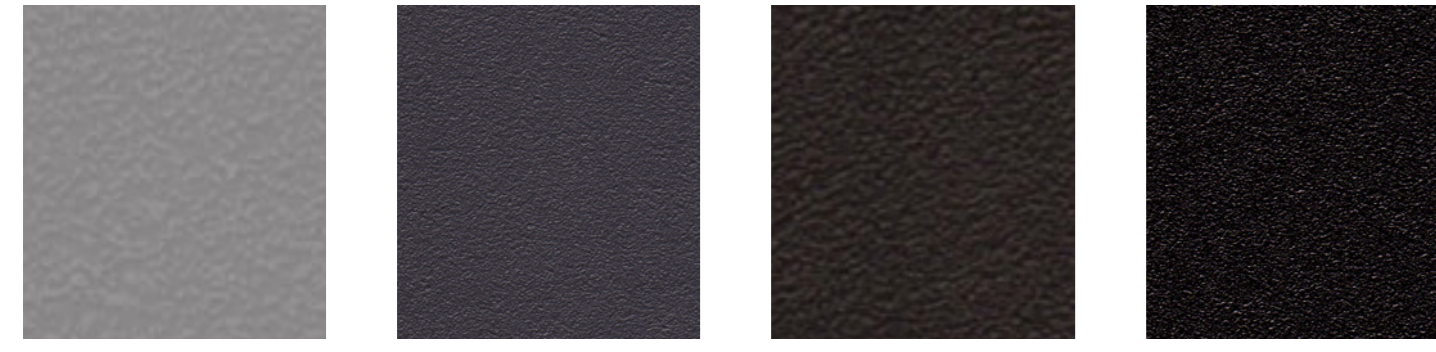


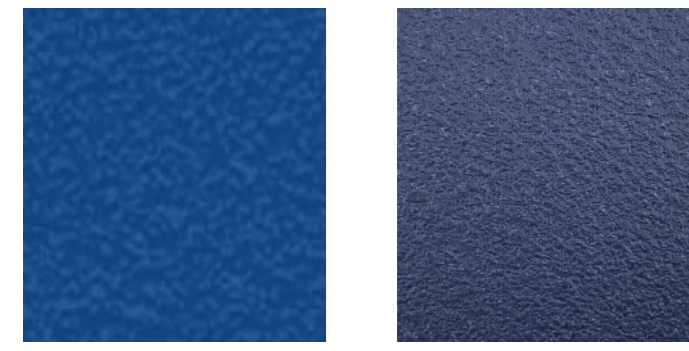
BOMA®-GRIP UNI



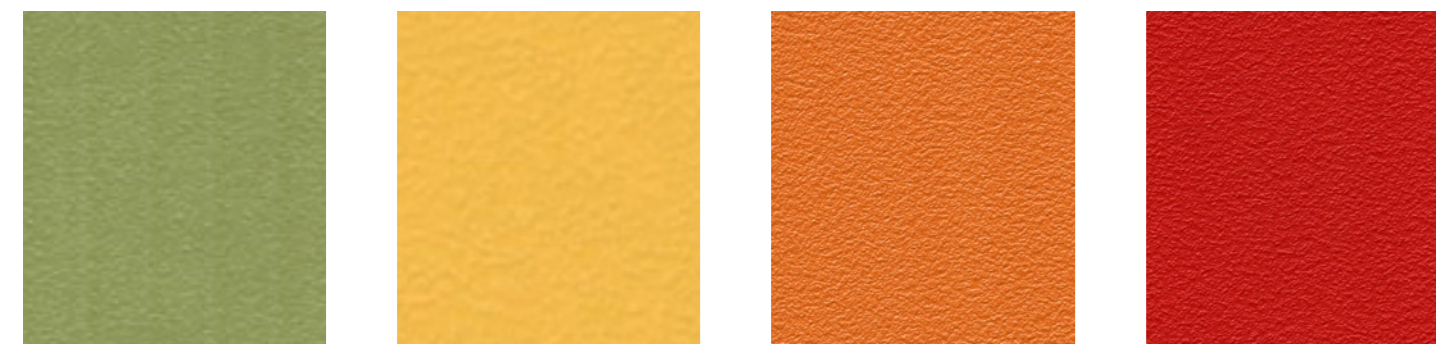
314303 creme weiß/white 314309 400 U 314355 7543 U 273051 429 U



314312 424 U 314301 426 U 273052 Black 6U 314302 Black 6U 2X



314318 287 U 314354 2748 U



314352 583 U 314317 141 U 314306 151 U 314305 1795 U

PRODUKTINFORMATIONEN PRODUCT INFORMATION

Qualität quality	Beschreibung description	Breite ca. width approx.	Gesamthöhe ca. total height approx.	Gesamtgewicht ca. total weight approx.	Brennverhalten fire classification EN 13501-1 Rutschhemmung slip resistance	Klassifizierung classification EN 685
BOMA®-FLY	PVC-Verbundbelag mit Glasvliesarmierung pvc composite flooring with glas fibre reinforcement	200 cm 25 m	2,0 mm	1300 g/m ²	Cfl-s1 R 9	
BOMA®-GRIP UNI	PVC-Verbundbelag mit Glasvliesarmierung pvc composite flooring with glas fibre reinforcement	200 cm 30 m	2,0 mm	1250 g/m ²	Cfl-s1 R 10	
BOMA®-ELAST PRINT	PVC-Verbundbelag mit Glasvliesarmierung pvc composite flooring with glas fibre reinforcement	200 cm 25 m	2,5 mm	1500 g/m ²	Bfl-s1 R 10	
BOMA®-ELAST GLANZ 10.7	PVC-Verbundbelag mit Glasvliesarmierung pvc composite flooring with glas fibre reinforcement	150 cm 25 m	2,0 mm	1300 g/m ²	Cfl-s1 nicht getestet not tested	
TANZBODEN	PVC-Verbundbelag mit Glasvliesarmierung pvc composite flooring with glas fibre reinforcement	160 + 200 cm 20 / 30 / 40 m	1,2 mm	1500 g/m ²	Bfl-s1 nicht getestet not tested	nicht getestet not tested
BOMA®-ELAST STANDARD	PVC-Verbundbelag mit Glasvliesarmierung pvc composite flooring with glas fibre reinforcement	200 cm 30 m	2,0 - 3,0 mm	1250 g/m ² bis 1800 g/m ²	Bfl-s1 R 9 / R 10	
BOMA®-ELAST COMFORT	PVC-Verbundbelag mit Glasvliesarmierung pvc composite flooring with glas fibre reinforcement	200 cm 28 bis 30 m	2,8 mm	1900 g/m ² bis 1950 g/m ²	Bfl-s1 R 10	
BOMA®-ELAST R11	PVC-Verbundbelag mit Glasvliesarmierung pvc composite flooring with glas fibre reinforcement	200 cm 25 m	2,5 mm	1330 g/m ²	Bfl-s1 R 11	



TANZBODEN
 BOMA-ELAST STANDARD
 BOMA-ELAST COMFORT
 BOMA-ELAST R 11
 BOMA-FLY
 BOMA-GRIP UNI
 BOMA-ELAST PRINT
 BOMA-ELAST GLANZ 10.7

BOMA®-ELAST
 2025

BOMA®-ELAST 2025



MARKUS GMBH

Bodenbeläge für Messe und Objekt
floor coverings for fair and object

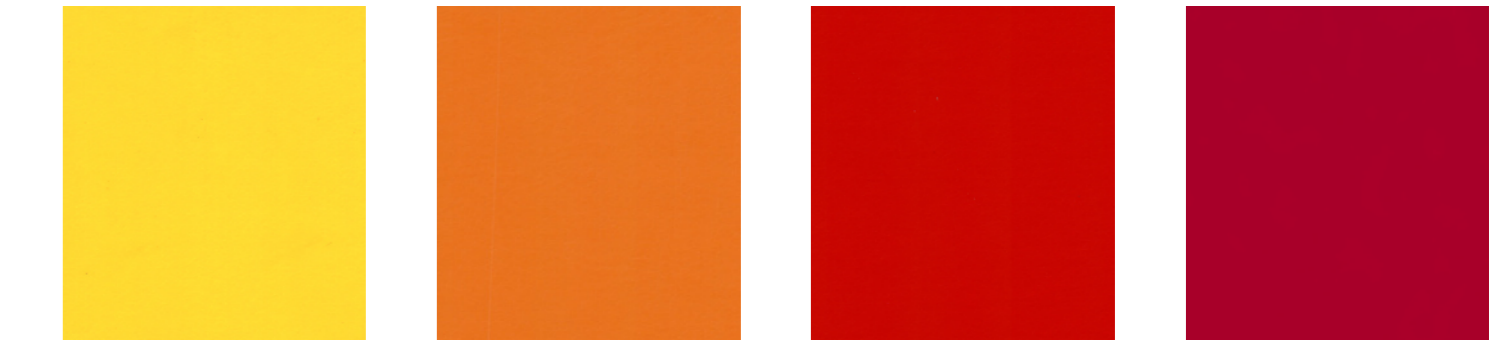
BOMA®- FLY



270701 weiß/white 270716 468 U 270713 cool grey 4U 270714 cool grey 5U



270707 cool grey 7U 270708 cool grey 11U 270715 Black 6U 270709 Black 3U 2X



270703 141 U 270710 Orange 021U 270704 1795 U 270728 2041 U



270724 361 U 270722 336 U 270727 220 U



270723 270725 3005 U 270712 286 U 270706 2748 U

BOMA®- ELAST PRINT



314264

Sand



314261

Erdboden



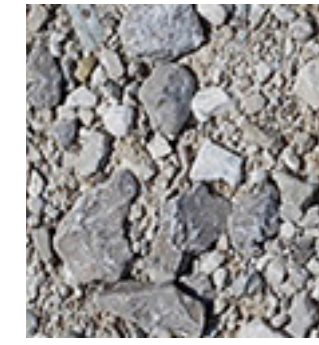
314265

Wasser



314266

Asphalt



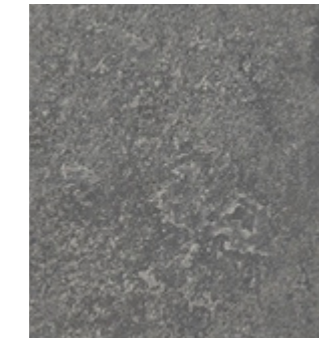
314262

Schotter



314263

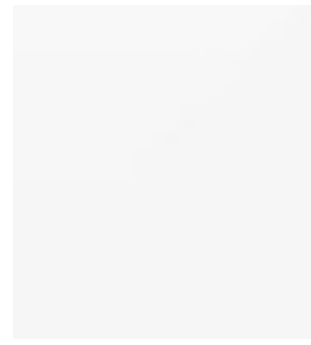
Pflasterstein



314267

Schiefer

BOMA®- ELAST GLANZ 10.7



213151

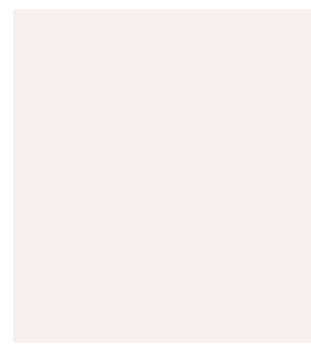


213153



213152

TANZBODEN



295103



295101

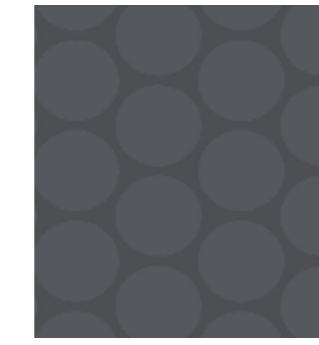
Beidseitig verwendbar,
erhältlich in:
weiß/schwarz & schwarz/grau

*reversible surface,
available in:
white/black & black/grey*

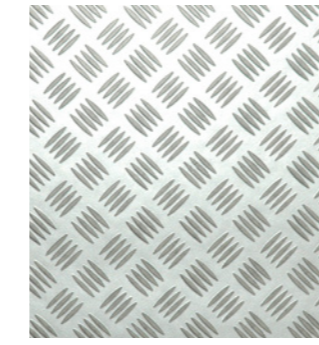
BOMA®- ELAST STANDARD



314213



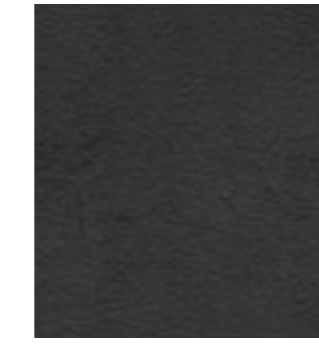
314214



314202



314206



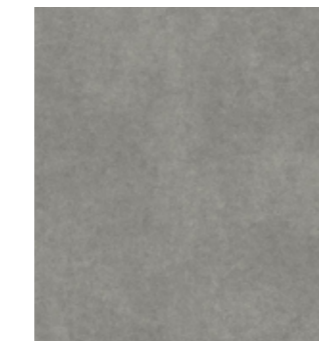
314207



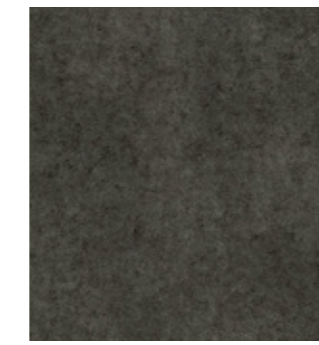
273042
Schachbrett
Rapport 100 x 100 cm
Fliese: 25 x 25 cm



273181



273161



273162



314332



273182

Fischgrät



314331



314337



273201



314344



314345



314325

BOMA®- ELAST COMFORT



273071



273072



273243



273242



273241



273144



273143

Flächenbilder
Online



Scan Me

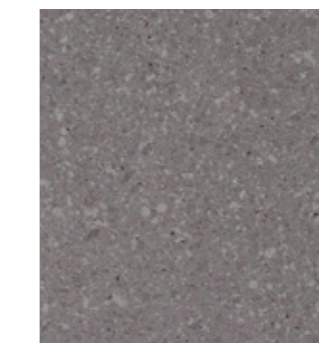
BOMA®- ELAST R11



273224



273223



273222



273221

BOMA®- ELAST COMFORT



273071

Griffmuster ▲

BOMA®- ELAST R11



273221

Griffmuster ▲